

**Technical
Presentation**

Assetcare Services Private Limited



Index



- ❖ Our Capability
- ❖ Technical O&M capacity
- ❖ IFM & Value added services
- ❖ Present Equipment handling
- ❖ JD for Each categories
- ❖ Transition Management
- ❖ Training, R&R and Employee care
- ❖ Recruitment Process, Escalation matrix ,Reports
- ❖ Value added services



Our Capability

2Years of external market penetration

15+ Technical Staff

10+ Technical Service Offering

Fastest growing Integrated facility management company



10+ Clients

- Managerial team of young energetic & hardworking professionals
- Faster mobilization turnaround
- 3+ B license technicians & 2 C license Supervisors / Engineers
- Dedicated Project management team for all your One Time Needs

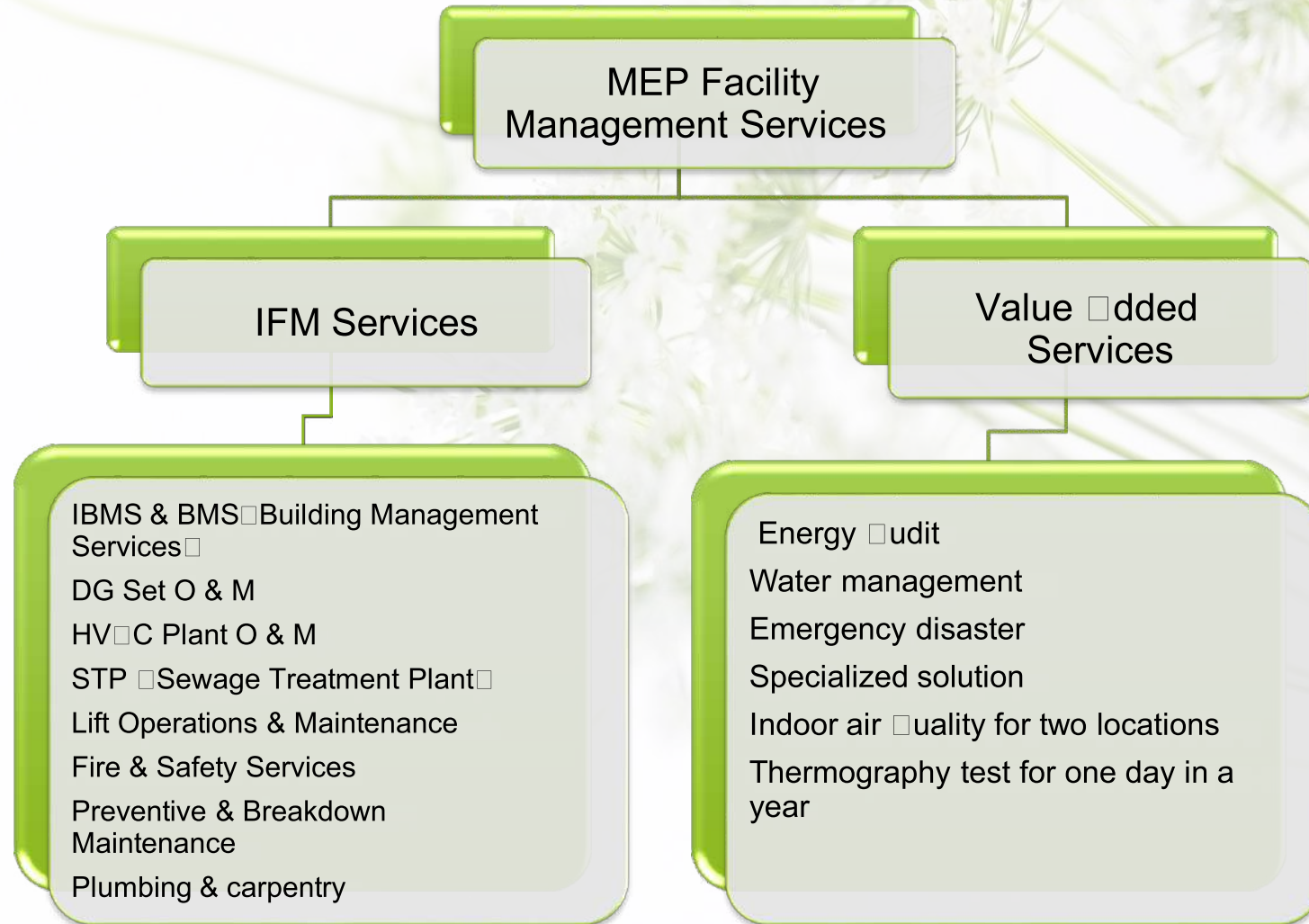
Our Strength & Technical Capabilities

- ❖ Strong Engineering background company
- ❖ Managerial team of young, energetic & hardworking professionals
- ❖ Faster mobilization turnaround
- ❖ Scheduled Training and Process – Both On the Job & Class Room Training
- ❖ Over 15 Strong and dedicated technical manpower
- ❖ Over 3 B license technicians & 2 C license Supervisors / Engineers
- ❖ System based on Standard Operating Procedures, Action plans, Instructions, Checklist, Feedback and Improvement plans based on ISO 9001:2008
- ❖ Material Management & Logistic Team to provide cost control methods and timely delivery of required materials
- ❖ 24 X 7 – Support for uninterrupted services

Our Technical O & M Services Capacity

- ❖ HT/LT Panels, ATS,VCBS, Transformers, HVAC, Chillers, AHU,s, PAC,s ,UPS, All circuit breakers, Fire panels, all types of panels, DB,s, etc..
- ❖ Power grid Substation 11kv, 33kv, 66kv,110kv
- ❖ Diesel Generator (DG set), AMF panels, DG synchronization
- ❖ BMS system, Access Control, Fire Alarm, Fire hydrant system, CCTV, Water Leak Detection system, Public Address system.
- ❖ Operation and maintenance of various industry installations such as air compressors, oxygen plants, steam boilers, cooling towers, water chillier, brine chillier, RO Plants, ETP/STP/WTP etc..
- ❖ Annual electrical inspectorate periodical inspection works, annual shutdowns maintenance, earth pits, calibration works, etc..
- ❖ Operation and maintenance of solar power plant.

ACS IFM & Value Added Services



Our Technical Services —O & M Sectors

- INFORMATION TECHNOLOGY
- FACTORY
- COMMERCIAL
- RESIDENTIAL
- EDUCATION

Our Technical Services —O& M/categories

Facility Manager/Assistant facility Manager

Help Desk/Admin/Accountant

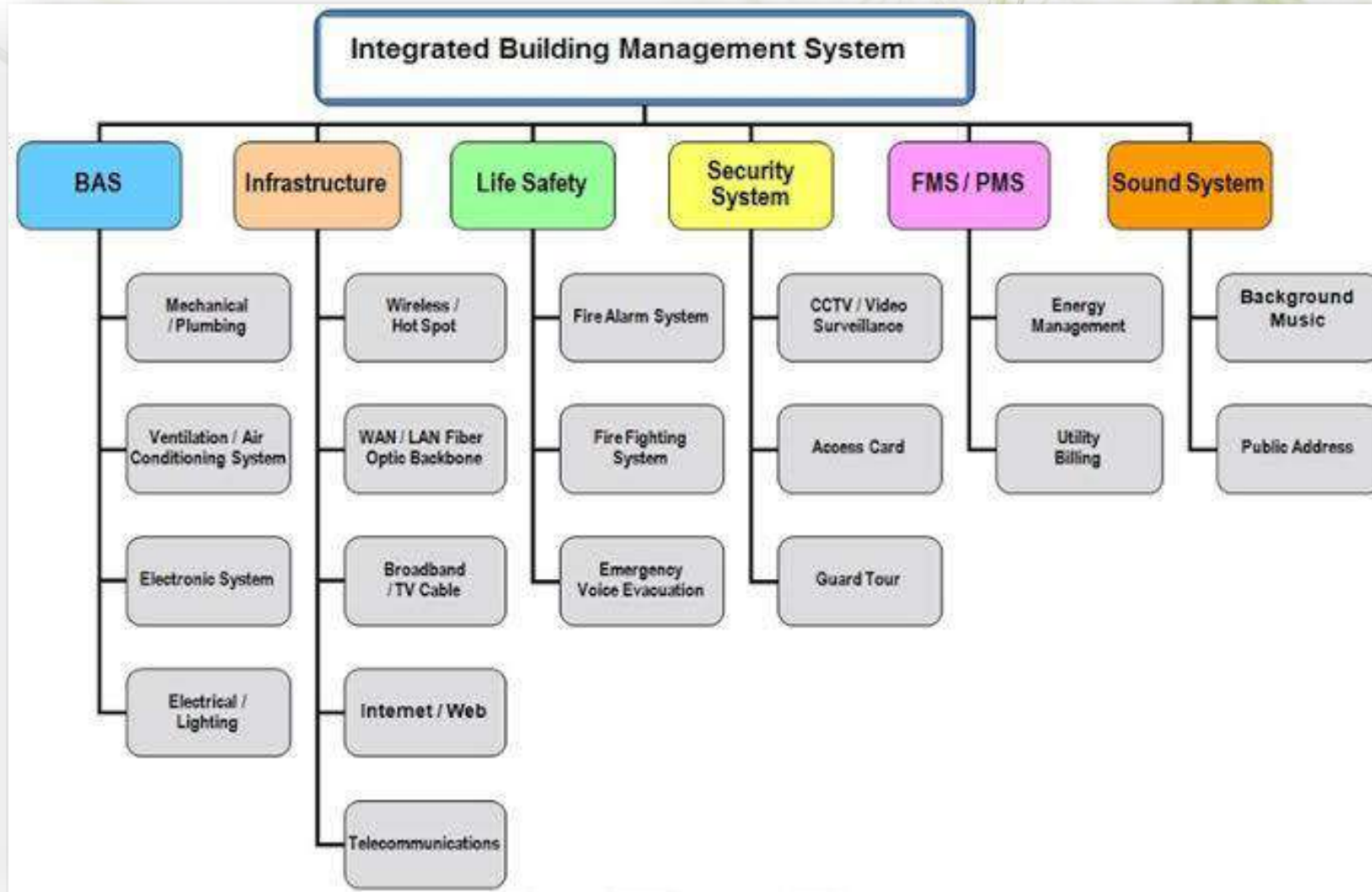
IBMS & BMS Supervisor/Operators

Shift engineers/Shift Supervisors/Senior & Junior Technicians

Mechanical Supervisor/Mechanical technician/ Plumber /STP & WTP operators/Fire officers/welders/Fitters

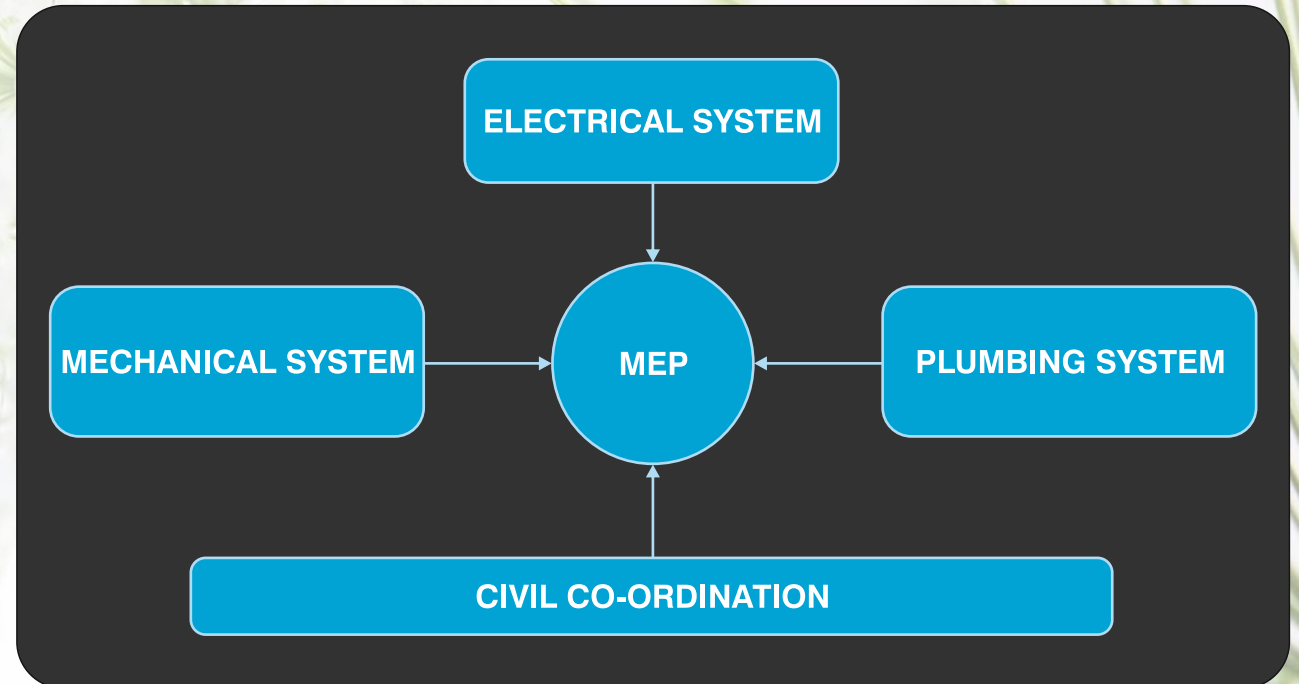
HVAC Supervisor/ HVAC Technician

Our Technical Services — O & M / Categories



MEP SERVICES

- MEP or Mechanical, Electrical and Plumbing is an important part of building project required for creating a safe and comfortable environment inside the building.
- In simple terms, it is the prerequisite to begin on a construction project and MEP (Mechanical, Electrical and Plumbing) co-ordination is one of the most challenging tasks faced by the engineers and professionals as they can account for up to 40% to 60% of the project.



Our Transition management

- Understanding of SOW & Operational Deliverables with one to one meeting with clients and through documents shared.
- Creation of SOP for the site and job description for Resources Required.
- Recruitment process based on JD – Recruitment process mentioned separately
- Resource Recruitment
- HR Induction
- Joining Formalities and Bank Documentation
- Issuance of ESI for resources to be deployed.
- Antecedent Report for the Team
- Customized Uniforms – Issuance for resources
- Working on shadow operations
- Site Commencement – GO LIVE

Our Operations —Employee Care

- On time salary payment to field staffs
- Salary process through Bank account
- 100 % statutory benefits includes ESI, PF and Bonus.
- Rewards & Recognition programme for staffs.
- Refer and win programme for additional income- (RAW Scheme).
- Medical camps for Employees.

Our Training Schedules and Topics on M&E

- Training assessment need analysis would be done based on SOW arrived.
- Resources would be evaluated based on needs – Technical & Basic communication – Training topics would be realigned.
- 52 week training calendar would be derived based on needs.
- Frequent follow up on Training measures and outcomes would be measured and requirements would be realigned.
- Basic Topics
 - Safety compliances
 - Site related Equipment's handling.
 - Authorized OEM's Training requirements if required
 - Basic communication skills and Grooming standards

We Submit MIS Reports 5th of Every Month

- Equipment – Planned preventive maintenance schedules.
- UPS Schedules
- DG
- Air Conditioners
- Cooling towers
- Others
- Transformer
- Air Compressors
- HT / LT Panels &
- STP / WTP
- Daily Customized Reports – Based on Client requirements.
- Thermography Reports
- Monthly Management Review meet
- Internal Audit reports – Based on timelines agreed.

Our Operations —Customer care

- 24 X 7 Escalation matrix for day to day operational needs.
- Dedicated Client relationship manager in addition to operations team.
- Frequent Customer Survey for operational improvements.
- Survey from end clients also to understand the requirements.
- Frequent customer connect programs to understand requirements.
- Adherence to statutory compliances required for client audits

Our Recruitment Process

Advertisements published through job portals, newspapers and consultancy.

Screening the Resumes → Rejected ----Out

Selected

Interview is scheduled

Preliminary Interview/Written test, Technical Test (if required)

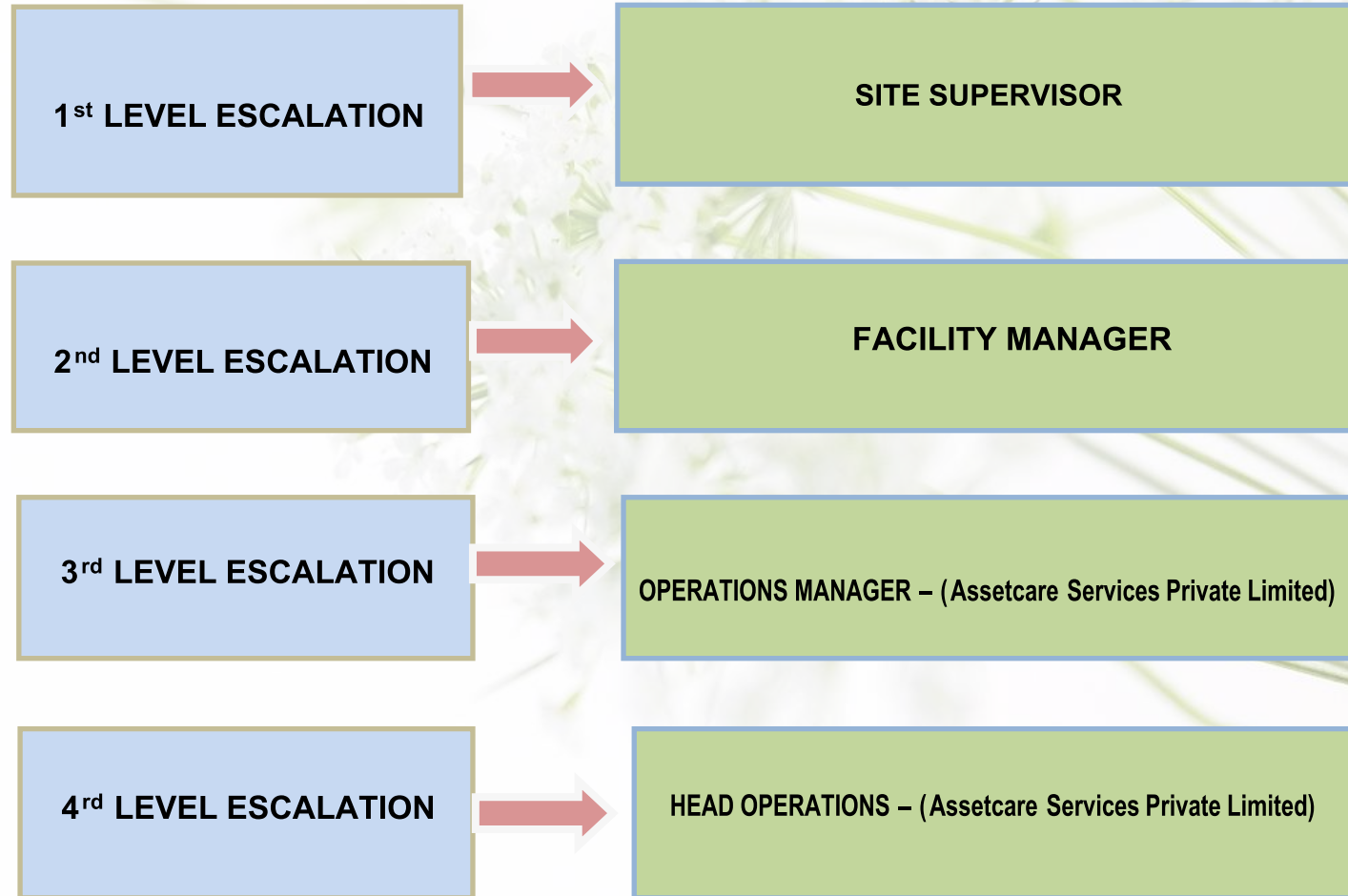
Final Interview - (Line/ HR Manager)

Offer and Acceptance Letter

Background Check

Joining

Operation Escalation matrix





Our Valued Clients





Gallery





Assetcare Services Private Limited

☎ 0422 7140304

☎ + 91 91595 91596, +91 91595 72727

✉ support@assetcareservices.co.in

🌐 www.assetcareservices.co.in

📍 B-09, Ground Floor, Viswadass Nagar,
New Keeranatham,
Near CHIL SEZ, Saravanampatti,
Coimbatore - 641 035, Tamilnadu, India.

Thank You!
😊